

# Lower Thames Crossing

## 6.2 Environmental Statement Figures

### Figure 7.19 - Photomontages - Winter Year 1 and Summer Year 15 (4 of 4)

APFP Regulation 5(2)(a)  
Infrastructure Planning  
(Applications: Prescribed Forms and Procedure)  
Regulations 2009  
Volume 6

**DATE:** October 2022

Planning Inspectorate Scheme Ref: TR010032  
Application Document Ref: TR010032/APP/6.2

**VERSION:** 1.0

# Lower Thames Crossing

## Figure 7.19: Photomontages - Winter Year 1 and Summer Year 15 (4 of 4)

### List of contents

	Page number
<b>1 Photomontages</b> .....	<b>1</b>
1.1 Introduction .....	1
1.2 Schedule of Representative Viewpoints included in this application document .....	1

# 1 Photomontages

## 1.1 Introduction

- 1.1.1 For each Representative Viewpoint, the following photography and photomontage views have been provided:
- a. Baseline photography - Winter
  - b. Corresponding photomontage – Year 1 (opening year)
  - c. Baseline photography – Summer
  - d. Corresponding photomontage – Year 15 (design year)

## 1.2 Schedule of Representative Viewpoints included in this application document

- 1.2.1 Baseline photography and photomontages have been included for the following Representative Viewpoints within this part of Figure 7.19:

### Part Four of Figure 7.19: North of the River Thames

- a. N-23 - View from Grays urban edge (off Long Lane)
- b. N-25 - View from the intersection of footpath 93, footpath 96 and bridleway 206 on southern urban edge of Orsett
- c. N-27 - View from bridleway 161 adjacent to junction of Green Lane/ Stifford Clays Road
- d. N-29a - View from bridleway 219 located on the Mardyke Way in Orsett Fen, open access land
- e. N-33 - View from intersection of footpaths 89 and 90 at Bulphan Fen (off Harrow Lane)
- f. N-39 - View from footpath 231 near St Mary Magdalene Church, in North Ockendon
- g. N-42 - View from permissive path within Thames Chase Forest Centre



Rev	Status	Rev. Date	Purpose of revision	Drawn	Chck'd	Apprv'd
P01	S8	05/08/2022	First Issued	BB	HP	SK

For location see Figure 7.16 - Visual Effects Drawing with Representative Viewpoint and Photomontage Locations

Camera: Canon EOS 6D MkII  
 Lens: Canon EF 50mm f/1.8 STM  
 Equipment: Manfrotto MA 454 Micro Positioning Plate  
 Manfrotto SBH-100 Ball Head

**Winter Viewpoint:**  
 Date and Time: N-23  
 21/02/2019 10:43

Visualisation Type: Type 3  
 Projection Type: Cylindrical  
 Enlargement Factor: 1.5  
 Horizontal FOV: 56.5°

FL, Max Aperture: 50mm, 1.75  
 Tripod Height: 1.5m  
 Viewpoint Ground Height: 25.4m AOD  
 Viewpoint Grid Reference: 562928E, 180292N

Distance to Order Limits: 35m  
 View Direction (Centre of View): ENE  
 GPS Accuracy: 5m



**LOWER THAMES CROSSING**  
 5th Floor Beaufort House  
 15 St Botolph Street  
 London EC3A 7DT

Project: LOWER THAMES CROSSING  
 Drawing title: Figure 7.19  
 Baseline Photography - Viewpoint N-23  
 Winter Year 1  
 Sheet 1 of 4

Drawn	BB	Date - 05/08/2022	Status	Revision
Checked	HP	Date - 05/08/2022	S8	P01
Approved	SK	Date - 05/08/2022	Application Document No. TR010032/APP/6.2	
Drawing number HE540039-CJV-ELS-SZP_ZZ000000_Z-DR-LV-00263A				



Rev	Status	Rev. Date	Purpose of revision	Drawn	Chck'd	Apprv'd
P01	S8	05/08/2022	First Issued	BB	HP	SK

For location see Figure 7.16 - Visual Effects Drawing with Representative Viewpoint and Photomontage Locations

Camera: Canon EOS 6D MkII  
 Lens: Canon EF 50mm f/1.8 STM  
 Equipment: Manfrotto MA 454 Micro Positioning Plate  
 Manfrotto SBH-100 Ball Head

**Winter Viewpoint:**  
 Date and Time: N-23  
 21/02/2019 10:43

Visualisation Type: Type 3  
 Projection Type: Cylindrical  
 Enlargement Factor: 1.5  
 Horizontal FOV: 56.5°

FL, Max Aperture: 50mm, 1.75  
 Tripod Height: 1.5m  
 Viewpoint Ground Height: 25.4m AOD  
 Viewpoint Grid Reference: 562928E, 180292N

Distance to Order Limits: 0m  
 View Direction (Centre of View): ENE  
 GPS Accuracy: 5m



**LOWER THAMES CROSSING**  
 5th Floor Beaufort House  
 15 St Botolph Street  
 London EC3A 7DT

Project: LOWER THAMES CROSSING  
 Drawing title: Figure 7.19  
 Photomontage - Viewpoint N-23  
 Winter Year 1  
 Sheet 1 of 4

Drawn	BB	Date - 05/08/2022	Status	Revision
Checked	HP	Date - 05/08/2022	S8	P01
Approved	SK	Date - 05/08/2022	Application Document No. TR010032/APP/6.2	
Drawing number		HE540039-CJV-ELS-SZP_ZZ000000_Z-DR-LV-00263		



For location see Figure 7.16 - Visual Effects Drawing with Representative Viewpoint and Photomontage Locations

**Winter Viewpoint:**  
Date and Time: N-23  
21/02/2019 10:43

Camera: Canon EOS 6D MkII  
Lens: Canon EF 50mm f/1.8 STM  
Equipment: Manfrotto MA 454 Micro Positioning Plate  
Manfrotto SBH-100 Ball Head

Visualisation Type: Type 3  
Projection Type: Cylindrical  
Enlargement Factor: 1.5  
Horizontal FOV: 56.5°

FL, Max Aperture: 50mm, 1.75  
Tripod Height: 1.5m  
Viewpoint Ground Height: 25.4m AOD  
Viewpoint Grid Reference: 562928E, 180292N  
Distance to Order Limits: 35m  
View Direction (Centre of View): ENE  
GPS Accuracy: 5m



**LOWER THAMES CROSSING**  
5th Floor Beaufort House  
15 St Botolph Street  
London EC3A 7DT

Project: LOWER THAMES CROSSING  
Drawing title: Figure 7.19  
Baseline Photography - Viewpoint N-23  
Winter Year 1  
Sheet 2 of 4

Drawn	BB	Date - 05/08/2022	Status	Revision
Checked	HP	Date - 05/08/2022	S8	P01
Approved	SK	Date - 05/08/2022	Application Document No. TR010032/APP/6.2	
Drawing number HE540039-CJV-ELS-SZP_ZZ000000_Z-DR-LV-00264A				

P01	S8	05/08/2022	First Issued	BB	HP	SK
Rev	Status	Rev. Date	Purpose of revision	Drawn	Chck'd	Apprv'd



P01	S8	05/08/2022	First Issued	BB	HP	SK
Rev	Status	Rev. Date	Purpose of revision	Drawn	Chck'd	Apprv'd

For location see Figure 7.16 - Visual Effects Drawing with Representative Viewpoint and Photomontage Locations

Camera: Canon EOS 6D MkII  
 Lens: Canon EF 50mm f/1.8 STM  
 Equipment: Manfrotto MA 454 Micro Positioning Plate  
 Manfrotto SBH-100 Ball Head

**Winter Viewpoint:**  
 Date and Time: N-23  
 21/02/2019 10:43

Visualisation Type: Type 3  
 Projection Type: Cylindrical  
 Enlargement Factor: 1.5  
 Horizontal FOV: 56.5°

FL, Max Aperture: 50mm, 1.75  
 Tripod Height: 1.5m  
 Viewpoint Ground Height: 25.4m AOD  
 Viewpoint Grid Reference: 562928E, 180292N

Distance to Order Limits: 0m  
 View Direction (Centre of View): ENE  
 GPS Accuracy: 5m



**LOWER THAMES CROSSING**  
 5th Floor Beaufort House  
 15 St Botolph Street  
 London EC3A 7DT

Project: LOWER THAMES CROSSING  
 Drawing title: Figure 7.19  
 Photomontage - Viewpoint N-23  
 Winter Year 1  
 Sheet 2 of 4

Drawn	BB	Date - 05/08/2022	Status	Revision
Checked	HP	Date - 05/08/2022	S8	P01
Approved	SK	Date - 05/08/2022	Application Document No. TR010032/APP/6.2	
Drawing number		HE540039-CJV-ELS-SZP_ZZ000000_Z-DR-LV-00264		



Rev	Status	Rev. Date	Purpose of revision	Drawn	Chck'd	Apprv'd
P01	S8	05/08/2022	First Issued	BB	HP	SK

For location see Figure 7.16 - Visual Effects Drawing with Representative Viewpoint and Photomontage Locations

Camera: Canon EOS 6D MkII  
 Lens: Canon EF 50mm f/1.8 STM  
 Equipment: Manfrotto MA 454 Micro Positioning Plate  
 Manfrotto SBH-100 Ball Head

**Summer Viewpoint:**  
 Date and Time: N-23  
 04/06/2019 10:47

Visualisation Type: Type 3  
 Projection Type: Cylindrical  
 Enlargement Factor: 1.5  
 Horizontal FOV: 56.5°

FL, Max Aperture: 50mm, 1.75  
 Tripod Height: 1.5m  
 Viewpoint Ground Height: 25.4m AOD  
 Viewpoint Grid Reference: 562928E, 180292N

Distance to Order Limits: 35m  
 View Direction (Centre of View): ENE  
 GPS Accuracy: 5m



**LOWER THAMES CROSSING**  
 5th Floor Beaufort House  
 15 St Botolph Street  
 London EC3A 7DT

Project: LOWER THAMES CROSSING  
 Drawing title: Figure 7.19  
 Baseline Photography - Viewpoint N-23  
 Summer Year 15  
 Sheet 3 of 4

Drawn	BB	Date - 05/08/2022	Status	Revision
Checked	HP	Date - 05/08/2022	S8	P01
Approved	SK	Date - 05/08/2022	Application Document No. TR010032/APP/6.2	
Drawing number HE540039-CJV-ELS-SZP_ZZ000000_Z-DR-LV-00265A				





Rev	Status	Rev. Date	Purpose of revision	Drawn	Chck'd	Apprv'd
P01	S8	05/08/2022	First Issued	BB	HP	SK

For location see Figure 7.16 - Visual Effects Drawing with Representative Viewpoint and Photomontage Locations		<b>Summer Viewpoint:</b>	N-23				
		Date and Time:	04/06/2019 10:47				
Camera:	Canon EOS 6D MkII	Visualisation Type:	Type 3	FL, Max Aperture:	50mm, 1.75	Distance to Order Limits:	0m
Lens:	Canon EF 50mm f/1.8 STM	Projection Type:	Cylindrical	Tripod Height:	1.5m	View Direction	(Centre of View): ENE
Equipment:	Manfrotto MA 454 Micro Positioning Plate	Enlargement Factor:	1.5	Viewpoint Ground Height:	25.4m AOD	Viewpoint Grid Reference:	562928E, 180292N
	Manfrotto SBH-100 Ball Head	Horizontal FOV:	56.5°	Viewpoint Grid Reference:	562928E, 180292N	GPS Accuracy:	5m



**LOWER THAMES CROSSING**  
 5th Floor Beaufort House  
 15 St Botolph Street  
 London EC3A 7DT

Project	LOWER THAMES CROSSING
Drawing title	Figure 7.19 Photomontage - Viewpoint N-23 Summer Year 15 Sheet 3 of 4

Drawn	BB	Date - 05/08/2022	Status	S8	Revision	P01
Checked	HP	Date - 05/08/2022	Application Document No. TR010032/APP/6.2			
Approved	SK	Date - 05/08/2022	Drawing number			
HE540039-CJV-ELS-SZP_ZZ000000_Z-DR-LV-00265						



P01	S8	05/08/2022	First Issued	BB	HP	SK
Rev	Status	Rev. Date	Purpose of revision	Drawn	Chck'd	Apprv'd

For location see Figure 7.16 - Visual Effects Drawing with Representative Viewpoint and Photomontage Locations		<b>Summer Viewpoint:</b>	N-23				
		Date and Time:	04/06/2019 10:47				
Camera:	Canon EOS 6D MkII	Visualisation Type:	Type 3	FL, Max Aperture:	50mm, 1.75	Distance to Order Limits:	35m
Lens:	Canon EF 50mm f/1.8 STM	Projection Type:	Cylindrical	Tripod Height:	1.5m	View Direction	(Centre of View): ENE
Equipment:	Manfrotto MA 454 Micro Positioning Plate	Enlargement Factor:	1.5	Viewpoint Ground Height:	25.4m AOD	Viewpoint Grid Reference:	562928E, 180292N
	Manfrotto SBH-100 Ball Head	Horizontal FOV:	56.5°	Viewpoint Grid Reference:	562928E, 180292N	GPS Accuracy:	5m



**LOWER THAMES CROSSING**  
 5th Floor Beaufort House  
 15 St Botolph Street  
 London EC3A 7DT

Project	LOWER THAMES CROSSING
Drawing title	Figure 7.19 Baseline Photography - Viewpoint N-23 Summer Year 15 Sheet 4 of 4

Drawn	BB	Date - 05/08/2022	Status	Revision
Checked	HP	Date - 05/08/2022	S8	P01
Approved	SK	Date - 05/08/2022	Application Document No. TR010032/APP/6.2	
Drawing number		HE540039-CJV-ELS-SZP_ZZ000000_Z-DR-LV-00266A		



P01	S8	05/08/2022	First Issued	BB	HP	SK
Rev	Status	Rev. Date	Purpose of revision	Drawn	Chck'd	Apprv'd

For location see Figure 7.16 - Visual Effects Drawing with Representative Viewpoint and Photomontage Locations		<b>Summer Viewpoint:</b>	N-23				
		Date and Time:	04/06/2019 10:47				
Camera:	Canon EOS 6D MkII	Visualisation Type:	Type 3	FL, Max Aperture:	50mm, 1.75	Distance to Order Limits:	0m
Lens:	Canon EF 50mm f/1.8 STM	Projection Type:	Cylindrical	Tripod Height:	1.5m	View Direction	(Centre of View): ENE
Equipment:	Manfrotto MA 454 Micro Positioning Plate	Enlargement Factor:	1.5	Viewpoint Ground Height:	25.4m AOD	GPS Accuracy:	5m
	Manfrotto SBH-100 Ball Head	Horizontal FOV:	56.5°	Viewpoint Grid Reference:	562928E, 180292N		



**LOWER THAMES CROSSING**  
 5th Floor Beaufort House  
 15 St Botolph Street  
 London EC3A 7DT

Project	LOWER THAMES CROSSING
Drawing title	Figure 7.19 Photomontage - Viewpoint N-23 Summer Year 15 Sheet 4 of 4

Drawn	BB	Date - 05/08/2022	Status	Revision
Checked	HP	Date - 05/08/2022	S8	P01
Approved	SK	Date - 05/08/2022	Application Document No. TR010032/APP/6.2	
Drawing number		HE540039-CJV-ELS-SZP_ZZ000000_Z-DR-LV-00266		



Rev	Status	Rev. Date	Purpose of revision	Drawn	Chck'd	Apprv'd
P01	S8	05/08/2022	First Issued	BB	HP	SK

For location see Figure 7.16 - Visual Effects Drawing with Representative Viewpoint and Photomontage Locations

Camera: Canon EOS 6D MkII  
 Lens: Canon EF 50mm f/1.8 STM  
 Equipment: Manfrotto MA 454 Micro Positioning Plate  
 Manfrotto SBH-100 Ball Head

**Winter Viewpoint:** N-25  
 Date and Time: 21/02/2019 09:34

Visualisation Type: Type 3  
 Projection Type: Cylindrical  
 Enlargement Factor: 1.5  
 Horizontal FOV: 56.5°

FL, Max Aperture: 50mm, 1.75  
 Tripod Height: 1.65m  
 Viewpoint Ground Height: 38.5m AOD  
 Viewpoint Grid Reference: 564161E, 181382N

Distance to Order Limits: 345m  
 View Direction (Centre of View): SW  
 GPS Accuracy: 5m



**LOWER THAMES CROSSING**  
 5th Floor Beaufort House  
 15 St Botolph Street  
 London EC3A 7DT

Project: LOWER THAMES CROSSING  
 Drawing title: Figure 7.19  
 Baseline Photography - Viewpoint N-25  
 Winter Year 1  
 Sheet 1 of 2

Drawn	BB	Date - 05/08/2022	Status	Revision
Checked	HP	Date - 05/08/2022	S8	P01
Approved	SK	Date - 05/08/2022	Application Document No. TR010032/APP/6.2	
Drawing number HE540039-CJV-ELS-SZP_ZZ000000_Z-DR-LV-00267A				



P01	S8	05/08/2022	First Issued	BB	HP	SK
Rev	Status	Rev. Date	Purpose of revision	Drawn	Chck'd	Apprv'd

For location see Figure 7.16 - Visual Effects Drawing with Representative Viewpoint and Photomontage Locations

Camera: Canon EOS 6D MkII  
 Lens: Canon EF 50mm f/1.8 STM  
 Equipment: Manfrotto MA 454 Micro Positioning Plate  
 Manfrotto SBH-100 Ball Head

**Winter Viewpoint:**  
 Date and Time: N-25  
 21/02/2019 09:34

Visualisation Type: Type 3  
 Projection Type: Cylindrical  
 Enlargement Factor: 1.5  
 Horizontal FOV: 56.5°

FL, Max Aperture: 50mm, 1.75  
 Tripod Height: 1.65m  
 Viewpoint Ground Height: 38.5m AOD  
 Viewpoint Grid Reference: 564161E, 181382N

Distance to Order Limits: 50m  
 View Direction (Centre of View): SW  
 GPS Accuracy: 5m



**LOWER THAMES CROSSING**  
 5th Floor Beaufort House  
 15 St Botolph Street  
 London EC3A 7DT

Project: LOWER THAMES CROSSING  
 Drawing title: Figure 7.19  
 Photomontage - Viewpoint N-25  
 Winter Year 1  
 Sheet 1 of 2

Drawn	BB	Date - 05/08/2022	Status	Revision
Checked	HP	Date - 05/08/2022	S8	P01
Approved	SK	Date - 05/08/2022	Application Document No. TR010032/APP/6.2	
Drawing number HE540039-CJV-ELS-SZP_ZZ000000_Z-DR-LV-00267				



Rev	Status	Rev. Date	Purpose of revision	Drawn	Chck'd	Apprv'd
P01	S8	05/08/2022	First Issued	BB	HP	SK

For location see Figure 7.16 - Visual Effects Drawing with Representative Viewpoint and Photomontage Locations

<b>Summer Viewpoint:</b>	N-25	<b>FL, Max Aperture:</b>	50mm, 1.75	<b>Distance to Order Limits:</b>	345m
<b>Date and Time:</b>	05/06/2019 18:04	<b>Tripod Height:</b>	1.65m	<b>View Direction</b>	SW
<b>Visualisation Type:</b>	Type 3	<b>Viewpoint Ground Height:</b>	38.5m AOD	<b>(Centre of View):</b>	SW
<b>Projection Type:</b>	Cylindrical	<b>Viewpoint Grid Reference:</b>	564161E, 181382N	<b>GPS Accuracy:</b>	5m
<b>Enlargement Factor:</b>	1.5				
<b>Horizontal FOV:</b>	56.5°				

Client



**LOWER THAMES CROSSING**  
 5th Floor Beaufort House  
 15 St Botolph Street  
 London EC3A 7DT

<b>Project</b>	LOWER THAMES CROSSING
<b>Drawing title</b>	Figure 7.19 Baseline Photography - Viewpoint N-25 Summer Year 15 Sheet 2 of 2

<b>Drawn</b>	BB	<b>Date</b>	- 05/08/2022	<b>Status</b>	S8	<b>Revision</b>	P01
<b>Checked</b>	HP	<b>Date</b>	- 05/08/2022				
<b>Approved</b>	SK	<b>Date</b>	- 05/08/2022				
<b>Drawing number</b>				HE540039-CJV-ELS-SZP_ZZ000000_Z-DR-LV-00268A			



Rev	Status	Rev. Date	Purpose of revision	Drawn	Chck'd	Apprv'd
P01	S8	05/08/2022	First Issued	BB	HP	SK

For location see Figure 7.16 - Visual Effects Drawing with Representative Viewpoint and Photomontage Locations

Camera: Canon EOS 6D MkII  
 Lens: Canon EF 50mm f/1.8 STM  
 Equipment: Manfrotto MA 454 Micro Positioning Plate  
 Manfrotto SBH-100 Ball Head

**Summer Viewpoint:**  
 Date and Time: N-25  
 05/06/2019 18:04

Visualisation Type: Type 3  
 Projection Type: Cylindrical  
 Enlargement Factor: 1.5  
 Horizontal FOV: 56.5°

FL, Max Aperture: 50mm, 1.75  
 Tripod Height: 1.65m  
 Viewpoint Ground Height: 38.5m AOD  
 Viewpoint Grid Reference: 564161E, 181382N

Distance to Order Limits: 50m  
 View Direction (Centre of View): SW  
 GPS Accuracy: 5m



**LOWER THAMES CROSSING**  
 5th Floor Beaufort House  
 15 St Botolph Street  
 London EC3A 7DT

Project: LOWER THAMES CROSSING  
 Drawing title: Figure 7.19  
 Photomontage - Viewpoint N-25  
 Summer Year 15  
 Sheet 2 of 2

Drawn	BB	Date - 05/08/2022	Status	Revision
Checked	HP	Date - 05/08/2022	S8	P01
Approved	SK	Date - 05/08/2022	Application Document No. TR010032/APP/6.2	
Drawing number			HE540039-CJV-ELS-SZP_ZZ000000_Z-DR-LV-00268	



P01	S8	05/08/2022	First Issued	BB	HP	SK
Rev	Status	Rev. Date	Purpose of revision	Drawn	Chck'd	Apprv'd

For location see Figure 7.16 - Visual Effects Drawing with Representative Viewpoint and Photomontage Locations		<b>Winter Viewpoint:</b> Date and Time:	N-27 20/02/2019 15:21	Camera:	Canon EOS 6D MkII	FL, Max Aperture:	50mm, 1.75	Distance to Order Limits:	370m
Lens:	Canon EF 50mm f/1.8 STM	Visualisation Type:	Type 3	Projection Type:	Cylindrical	Tripod Height:	1.5m	View Direction:	NNE
Equipment:	Manfrotto MA 454 Micro Positioning Plate	Enlargement Factor:	1.5	Viewpoint Ground Height:	20.6m AOD	Viewpoint Grid Reference:	562184E, 181202N	GPS Accuracy:	5m
	Manfrotto SBH-100 Ball Head	Horizontal FOV:	56.5°						



**Client**  
**LOWER THAMES CROSSING**  
 5th Floor Beaufort House  
 15 St Botolph Street  
 London EC3A 7DT

**Project**  
 LOWER THAMES CROSSING  
**Drawing title**  
 Figure 7.19  
 Baseline Photography - Viewpoint N-27  
 Winter Year 1  
 Sheet 1 of 2

Drawn	BB	Date - 05/08/2022	Status	S8	Revision	P01
Checked	HP	Date - 05/08/2022	Application Document No. TR010032/APP/6.2			
Approved	SK	Date - 05/08/2022	Drawing number			
HE540039-CJV-ELS-SZP_ZZ000000_Z-DR-LV-00269A						





P01	S8	05/08/2022	First Issued	BB	HP	SK
Rev	Status	Rev. Date	Purpose of revision	Drawn	Chck'd	Apprv'd

For location see Figure 7.16 - Visual Effects Drawing with Representative Viewpoint and Photomontage Locations

Camera: Canon EOS 6D MkII  
 Lens: Canon EF 50mm f/1.8 STM  
 Equipment: Manfrotto MA 454 Micro Positioning Plate  
 Manfrotto SBH-100 Ball Head

**Winter Viewpoint:**  
 Date and Time: N-27  
 20/02/2019 15:21

Visualisation Type: Type 3  
 Projection Type: Cylindrical  
 Enlargement Factor: 1.5  
 Horizontal FOV: 56.5°

FL, Max Aperture: 50mm, 1.75  
 Tripod Height: 1.5m  
 Viewpoint Ground Height: 20.6m AOD  
 Viewpoint Grid Reference: 562184E, 181202N

Distance to Order Limits: 0m  
 View Direction (Centre of View): NNE  
 GPS Accuracy: 5m



**LOWER THAMES CROSSING**  
 5th Floor Beaufort House  
 15 St Botolph Street  
 London EC3A 7DT

Project: LOWER THAMES CROSSING  
 Drawing title: Figure 7.19  
 Photomontage - Viewpoint N-27  
 Winter Year 1  
 Sheet 1 of 2

Drawn	BB	Date - 05/08/2022	Status	Revision
Checked	HP	Date - 05/08/2022	S8	P01
Approved	SK	Date - 05/08/2022	Application Document No. TR010032/APP/6.2	
Drawing number HE540039-CJV-ELS-SZP_ZZ000000_Z-DR-LV-00269				



P01	S8	05/08/2022	First Issued	BB	HP	SK
Rev	Status	Rev. Date	Purpose of revision	Drawn	Chck'd	Apprv'd

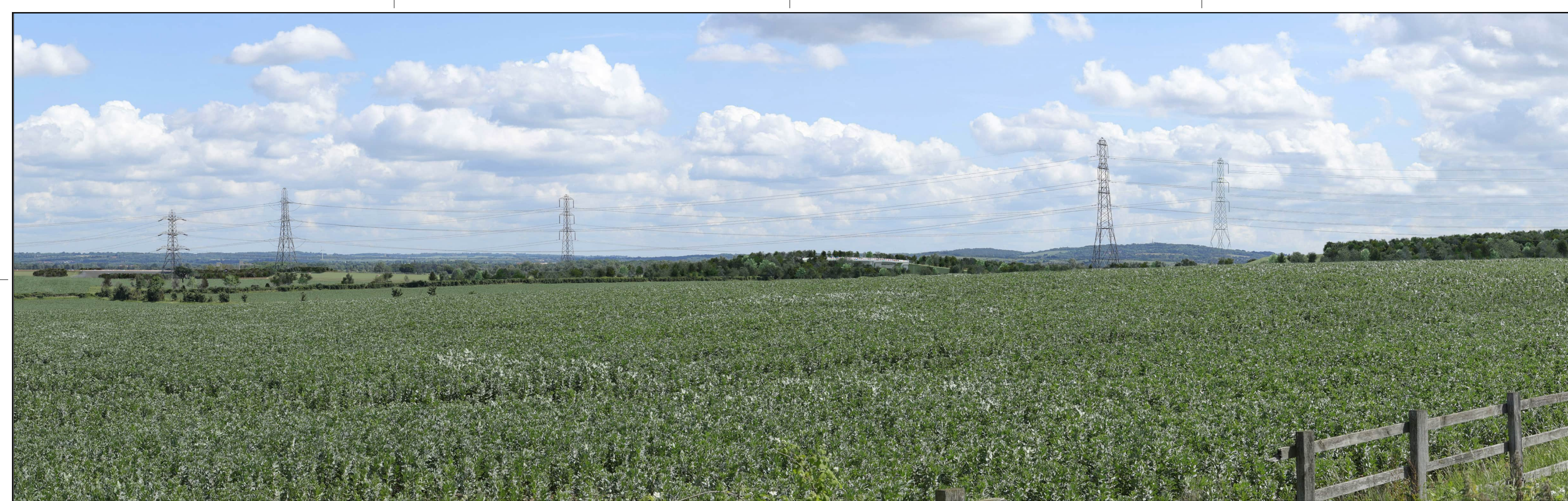
For location see Figure 7.16 - Visual Effects Drawing with Representative Viewpoint and Photomontage Locations		<b>Summer Viewpoint:</b>	N-27				
		Date and Time:	06/06/2019 10:23				
Camera:	Canon EOS 6D MkII	Visualisation Type:	Type 3	FL, Max Aperture:	50mm, 1.75	Distance to Order Limits:	370m
Lens:	Canon EF 50mm f/1.8 STM	Projection Type:	Cylindrical	Tripod Height:	1.5m	View Direction:	NNE
Equipment:	Manfrotto MA 454 Micro Positioning Plate	Enlargement Factor:	1.5	Viewpoint Ground Height:	20.6m AOD	(Centre of View):	NNE
	Manfrotto SBH-100 Ball Head	Horizontal FOV:	56.5°	Viewpoint Grid Reference:	562184E, 181202N	GPS Accuracy:	5m

Client

**LOWER THAMES CROSSING**  
 5th Floor Beaufort House  
 15 St Botolph Street  
 London EC3A 7DT

Project	LOWER THAMES CROSSING
Drawing title	Figure 7.19 Baseline Photography - Viewpoint N-27 Summer Year 15 Sheet 2 of 2

Drawn	BB	Date - 05/08/2022	Status	S8	Revision	P01
Checked	HP	Date - 05/08/2022				
Approved	SK	Date - 05/08/2022	Application Document No. TR010032/APP/6.2			
Drawing number		HE540039-CJV-ELS-SZP_ZZ000000_Z-DR-LV-00270A				



Rev	Status	Rev. Date	Purpose of revision	Drawn	Chck'd	Apprv'd
P01	S8	05/08/2022	First Issued	BB	HP	SK

For location see Figure 7.16 - Visual Effects Drawing with Representative Viewpoint and Photomontage Locations		<b>Summer Viewpoint:</b>		N-27	
		Date and Time:		06/06/2019 10:23	
Camera:	Canon EOS 6D MkII	Visualisation Type:	Type 3	FL, Max Aperture:	50mm, 1.75
Lens:	Canon EF 50mm f/1.8 STM	Projection Type:	Cylindrical	Tripod Height:	1.5m
Equipment:	Manfrotto MA 454 Micro Positioning Plate	Enlargement Factor:	1.5	Viewpoint Ground Height:	20.6m AOD
	Manfrotto SBH-100 Ball Head	Horizontal FOV:	56.5°	Viewpoint Grid Reference:	562184E, 181202N
				Distance to Order Limits:	0m
				View Direction (Centre of View):	NNE
				GPS Accuracy:	5m



**LOWER THAMES CROSSING**  
 5th Floor Beaufort House  
 15 St Botolph Street  
 London EC3A 7DT

Project	LOWER THAMES CROSSING
Drawing title	Figure 7.19 Photomontage - Viewpoint N-27 Summer Year 15 Sheet 2 of 2

Drawn	BB	Date - 05/08/2022	Status	S8	Revision	P01
Checked	HP	Date - 05/08/2022	Application Document No. TR010032/APP/6.2			
Approved	SK	Date - 05/08/2022	Drawing number			
HE540039-CJV-ELS-SZP_ZZ000000_Z-DR-LV-00270						



For location see Figure 7.16 - Visual Effects Drawing with Representative Viewpoint and Photomontage Locations

**Winter Viewpoint:**  
Date and Time: N-29a  
28/03/2019 11:25

Camera: Canon EOS 6D MkII  
Lens: Canon EF 50mm f/1.8 STM  
Equipment: Manfrotto MA 454 Micro Positioning Plate  
Manfrotto SBH-100 Ball Head

Visualisation Type: Type 3  
Projection Type: Cylindrical  
Enlargement Factor: 1.5  
Horizontal FOV: 56.5°

FL, Max Aperture: 50mm, 1.75  
Tripod Height: 1.5m  
Viewpoint Ground Height: 10.8m AOD  
Viewpoint Grid Reference: 562007E, 182846N

Distance to Order Limits: 0m  
View Direction (Centre of View): ENE  
GPS Accuracy: 5m



**LOWER THAMES CROSSING**  
5th Floor Beaufort House  
15 St Botolph Street  
London EC3A 7DT

Project: LOWER THAMES CROSSING  
Drawing title: Figure 7.19  
Baseline Photography - Viewpoint N-29a  
Winter Year 1  
Sheet 1 of 4

Drawn	BB	Date - 05/08/2022	Status	Revision
Checked	HP	Date - 05/08/2022	S8	P01
Approved	SK	Date - 05/08/2022	Application Document No. TR010032/APP/6.2	
Drawing number		HE540039-CJV-ELS-SZP_ZZ000000_Z-DR-LV-00271A		

P01	S8	05/08/2022	First Issued	BB	HP	SK
Rev	Status	Rev. Date	Purpose of revision	Drawn	Chck'd	Apprv'd



For location see Figure 7.16 - Visual Effects Drawing with Representative Viewpoint and Photomontage Locations

**Winter Viewpoint:**  
Date and Time: N-29a  
28/03/2019 11:25

Camera: Canon EOS 6D MkII  
Lens: Canon EF 50mm f/1.8 STM  
Equipment: Manfrotto MA 454 Micro Positioning Plate  
Manfrotto SBH-100 Ball Head

Visualisation Type: Type 3  
Projection Type: Cylindrical  
Enlargement Factor: 1.5  
Horizontal FOV: 56.5°

FL, Max Aperture: 50mm, 1.75  
Tripod Height: 1.5m  
Viewpoint Ground Height: 10.8m AOD  
Viewpoint Grid Reference: 562007E, 182846N  
Distance to Order Limits: 0m  
View Direction (Centre of View): ENE  
GPS Accuracy: 5m



**LOWER THAMES CROSSING**  
5th Floor Beaufort House  
15 St Botolph Street  
London EC3A 7DT

Project: LOWER THAMES CROSSING  
Drawing title: Figure 7.19  
Photomontage - Viewpoint N-29a  
Winter Year 1  
Sheet 1 of 4

Drawn	BB	Date - 05/08/2022	Status	Revision
Checked	HP	Date - 05/08/2022	S8	P01
Approved	SK	Date - 05/08/2022	Application Document No. TR010032/APP/6.2	
Drawing number HE540039-CJV-ELS-SZP_ZZ000000_Z-DR-LV-00271				

P01	S8	05/08/2022	First Issued	BB	HP	SK
Rev	Status	Rev. Date	Purpose of revision	Drawn	Chck'd	Apprv'd



For location see Figure 7.16 - Visual Effects Drawing with Representative Viewpoint and Photomontage Locations

**Winter Viewpoint:**  
Date and Time: N-29a  
28/03/2019 11:25

Camera: Canon EOS 6D MkII  
Lens: Canon EF 50mm f/1.8 STM  
Equipment: Manfrotto MA 454 Micro Positioning Plate  
Manfrotto SBH-100 Ball Head

Visualisation Type: Type 3  
Projection Type: Cylindrical  
Enlargement Factor: 1.5  
Horizontal FOV: 56.5°

FL, Max Aperture: 50mm, 1.75  
Tripod Height: 1.5m  
Viewpoint Ground Height: 10.8m AOD  
Viewpoint Grid Reference: 562007E, 182846N  
Distance to Order Limits: 0m  
View Direction (Centre of View): ENE  
GPS Accuracy: 5m



**LOWER THAMES CROSSING**  
5th Floor Beaufort House  
15 St Botolph Street  
London EC3A 7DT

Project: LOWER THAMES CROSSING  
Drawing title: Figure 7.19  
Baseline Photography - Viewpoint N-29a  
Winter Year 1  
Sheet 2 of 4

Drawn	BB	Date - 05/08/2022	Status	Revision
Checked	HP	Date - 05/08/2022	S8	P01
Approved	SK	Date - 05/08/2022	Application Document No. TR010032/APP/6.2	
Drawing number HE540039-CJV-ELS-SZP_ZZ000000_Z-DR-LV-00272A				

P01	S8	05/08/2022	First Issued	BB	HP	SK
Rev	Status	Rev. Date	Purpose of revision	Drawn	Chck'd	Apprv'd



P01	S8	05/08/2022	First Issued	BB	HP	SK
Rev	Status	Rev. Date	Purpose of revision	Drawn	Chck'd	Apprv'd

For location see Figure 7.16 - Visual Effects Drawing with Representative Viewpoint and Photomontage Locations		<b>Winter Viewpoint:</b>	N-29a				
		Date and Time:	28/03/2019 11:25				
Camera:	Canon EOS 6D MkII	Visualisation Type:	Type 3	FL, Max Aperture:	50mm, 1.75	Distance to Order Limits:	0m
Lens:	Canon EF 50mm f/1.8 STM	Projection Type:	Cylindrical	Tripod Height:	1.5m	View Direction	(Centre of View): ENE
Equipment:	Manfrotto MA 454 Micro Positioning Plate	Enlargement Factor:	1.5	Viewpoint Ground Height:	10.8m AOD	GPS Accuracy:	5m
	Manfrotto SBH-100 Ball Head	Horizontal FOV:	56.5°	Viewpoint Grid Reference:	562007E, 182846N		



**LOWER THAMES CROSSING**  
 5th Floor Beaufort House  
 15 St Botolph Street  
 London EC3A 7DT

Project	LOWER THAMES CROSSING
Drawing title	Figure 7.19 Photomontage - Viewpoint N-29a Winter Year 1 Sheet 2 of 4

Drawn	BB	Date - 05/08/2022	Status	S8	Revision	P01
Checked	HP	Date - 05/08/2022	Application Document No. TR010032/APP/6.2			
Approved	SK	Date - 05/08/2022	Drawing number			
HE540039-CJV-ELS-SZP_ZZ000000_Z-DR-LV-00272						



For location see Figure 7.16 - Visual Effects Drawing with Representative Viewpoint and Photomontage Locations

<b>Summer Viewpoint:</b>		N-29a	
Date and Time:		05/06/2019 16:35	
Visualisation Type:	Type 3	FL, Max Aperture:	50mm, 1.75
Projection Type:	Cylindrical	Tripod Height:	1.5m
Enlargement Factor:	1.5	Viewpoint Ground Height:	10.8m AOD
Horizontal FOV:	56.5°	Viewpoint Grid Reference:	562007E, 182846N
		Distance to Order Limits:	0m
		View Direction (Centre of View):	ENE
		GPS Accuracy:	5m

Camera:	Canon EOS 6D MkII
Lens:	Canon EF 50mm f/1.8 STM
Equipment:	Manfrotto MA 454 Micro Positioning Plate Manfrotto SBH-100 Ball Head

Client



**LOWER THAMES CROSSING**  
 5th Floor Beaufort House  
 15 St Botolph Street  
 London EC3A 7DT

Project	LOWER THAMES CROSSING
Drawing title	Figure 7.19 Baseline Photography - Viewpoint N-29a Summer Year 15 Sheet 3 of 4

Drawn	BB	Date - 05/08/2022	Status	S8	Revision	P01
Checked	HP	Date - 05/08/2022	Application Document No. TR010032/APP/6.2			
Approved	SK	Date - 05/08/2022	Drawing number			
HE540039-CJV-ELS-SZP_ZZ000000_Z-DR-LV-00273A						

P01	S8	05/08/2022	First Issued	BB	HP	SK
Rev	Status	Rev. Date	Purpose of revision	Drawn	Chck'd	Apprv'd





P01	S8	05/08/2022	First Issued	BB	HP	SK
Rev	Status	Rev. Date	Purpose of revision	Drawn	Chck'd	Apprv'd

For location see Figure 7.16 - Visual Effects Drawing with Representative Viewpoint and Photomontage Locations		<b>Summer Viewpoint:</b> Date and Time: N-29a 05/06/2019 16:35		Visualisation Type: Type 3 Projection Type: Cylindrical Enlargement Factor: 1.5 Horizontal FOV: 56.5°		FL, Max Aperture: 50mm, 1.75 Tripod Height: 1.5m Viewpoint Ground Height: 10.8m AOD Viewpoint Grid Reference: 562007E, 182846N		Distance to Order Limits: 0m View Direction (Centre of View): ENE GPS Accuracy: 5m	
Camera:	Canon EOS 6D MkII	Equipment:	Manfrotto MA 454 Micro Positioning Plate Manfrotto SBH-100 Ball Head						

Client



**LOWER THAMES CROSSING**  
5th Floor Beaufort House  
15 St Botolph Street  
London EC3A 7DT

Project	LOWER THAMES CROSSING
Drawing title	Figure 7.19 Photomontage - Viewpoint N-29a Summer Year 15 Sheet 3 of 4

Drawn	BB	Date - 05/08/2022	Status	S8	Revision	P01
Checked	HP	Date - 05/08/2022	Application Document No. TR010032/APP/6.2			
Approved	SK	Date - 05/08/2022	Drawing number HE540039-CJV-ELS-SZP_ZZ000000_Z-DR-LV-00273			



P01	S8	05/08/2022	First Issued	BB	HP	SK
Rev	Status	Rev. Date	Purpose of revision	Drawn	Chck'd	Apprv'd

<small>For location see Figure 7.16 - Visual Effects Drawing with Representative Viewpoint and Photomontage Locations</small>		<b>Summer Viewpoint:</b> Date and Time: N-29a 05/06/2019 16:35	Camera: Canon EOS 6D MkII Lens: Canon EF 50mm f/1.8 STM Equipment: Manfrotto MA 454 Micro Positioning Plate Manfrotto SBH-100 Ball Head	Visualisation Type: Type 3 Projection Type: Cylindrical Enlargement Factor: 1.5 Horizontal FOV: 56.5°	FL, Max Aperture: 50mm, 1.75 Tripod Height: 1.5m Viewpoint Ground Height: 10.8m AOD Viewpoint Grid Reference: 562007E, 182846N	Distance to Order Limits: 0m View Direction (Centre of View): ENE GPS Accuracy: 5m
---	--	--	--	--	---	--

Client



**LOWER THAMES CROSSING**  
 5th Floor Beaufort House  
 15 St Botolph Street  
 London EC3A 7DT

Project	LOWER THAMES CROSSING
Drawing title	Figure 7.19 Baseline Photography - Viewpoint N-29a Summer Year 15 Sheet 4 of 4

Drawn	BB	Date - 05/08/2022	Status	S8	Revision	P01
Checked	HP	Date - 05/08/2022	Application Document No. TR010032/APP/6.2			
Approved	SK	Date - 05/08/2022	Drawing number			
HE540039-CJV-ELS-SZP_ZZ000000_Z-DR-LV-00274A						



P01	S8	05/08/2022	First Issued	BB	HP	SK
Rev	Status	Rev. Date	Purpose of revision	Drawn	Chck'd	Apprv'd

For location see Figure 7.16 - Visual Effects Drawing with Representative Viewpoint and Photomontage Locations		<b>Summer Viewpoint:</b> Date and Time: N-29a 05/06/2019 16:35		Camera: Canon EOS 6D MkII Lens: Canon EF 50mm f/1.8 STM Equipment: Manfrotto MA 454 Micro Positioning Plate Manfrotto SBH-100 Ball Head		Visualisation Type: Type 3 Projection Type: Cylindrical Enlargement Factor: 1.5 Horizontal FOV: 56.5°		FL, Max Aperture: 50mm, 1.75 Tripod Height: 1.5m Viewpoint Ground Height: 10.8m AOD Viewpoint Grid Reference: 562007E, 182846N		Distance to Order Limits: 0m View Direction (Centre of View): ENE GPS Accuracy: 5m	
--	--	--	--	--	--	--	--	---	--	--	--



**LOWER THAMES CROSSING**  
5th Floor Beaufort House  
15 St Botolph Street  
London EC3A 7DT

Project	LOWER THAMES CROSSING
Drawing title	Figure 7.19 Photomontage - Viewpoint N-29a Summer Year 15 Sheet 4 of 4

Drawn	BB	Date - 05/08/2022	Status	Revision
Checked	HP	Date - 05/08/2022	S8	P01
Approved	SK	Date - 05/08/2022	Application Document No. TR010032/APP/6.2	
Drawing number		HE540039-CJV-ELS-SZP_ZZ000000_Z-DR-LV-00274		



For location see Figure 7.16 - Visual Effects Drawing with Representative Viewpoint and Photomontage Locations

**Winter Viewpoint:**  
Date and Time: N-33  
21/02/2019 16:36

Camera: Canon EOS 6D MkII  
Lens: Canon EF 50mm f/1.8 STM  
Equipment: Manfrotto MA 454 Micro Positioning Plate  
Manfrotto SBH-100 Ball Head

Visualisation Type: Type 3  
Projection Type: Cylindrical  
Enlargement Factor: 1.5  
Horizontal FOV: 56.5°

FL, Max Aperture: 50mm, 1.75  
Tripod Height: 1.5m  
Viewpoint Ground Height: 4.3m AOD  
Viewpoint Grid Reference: 562452E, 184590N

Distance to Order Limits: 550m  
View Direction (Centre of View): NNW  
GPS Accuracy: 5m



**LOWER THAMES CROSSING**  
5th Floor Beaufort House  
15 St Botolph Street  
London EC3A 7DT

Project: LOWER THAMES CROSSING  
Drawing title: Figure 7.19  
Baseline Photography - Viewpoint N-33  
Winter Year 1  
Sheet 1 of 4

Drawn	BB	Date - 05/08/2022	Status	Revision
Checked	HP	Date - 05/08/2022	S8	P01
Approved	SK	Date - 05/08/2022	Application Document No. TR010032/APP/6.2	
Drawing number HE540039-CJV-ELS-SZP_ZZ000000_Z-DR-LV-00275A				

P01	S8	05/08/2022	First Issued	BB	HP	SK
Rev	Status	Rev. Date	Purpose of revision	Drawn	Chck'd	Apprv'd



For location see Figure 7.16 - Visual Effects Drawing with Representative Viewpoint and Photomontage Locations

**Winter Viewpoint:**  
Date and Time: N-33  
21/02/2019 16:36

Camera: Canon EOS 6D MkII  
Lens: Canon EF 50mm f/1.8 STM  
Equipment: Manfrotto MA 454 Micro Positioning Plate  
Manfrotto SBH-100 Ball Head

Visualisation Type: Type 3  
Projection Type: Cylindrical  
Enlargement Factor: 1.5  
Horizontal FOV: 56.5°

FL, Max Aperture: 50mm, 1.75  
Tripod Height: 1.5m  
Viewpoint Ground Height: 4.3m AOD  
Viewpoint Grid Reference: 562452E, 184590N

Distance to Order Limits: 550m  
View Direction (Centre of View): SW  
GPS Accuracy: 5m



**LOWER THAMES CROSSING**  
5th Floor Beaufort House  
15 St Botolph Street  
London EC3A 7DT

Project: LOWER THAMES CROSSING  
Drawing title: Figure 7.19  
Photomontage - Viewpoint N-33  
Winter Year 1  
Sheet 1 of 4

Drawn	BB	Date - 05/08/2022	Status	Revision
Checked	HP	Date - 05/08/2022	S8	P01
Approved	SK	Date - 05/08/2022	Application Document No. TR010032/APP/6.2	
Drawing number HE540039-CJV-ELS-SZP_ZZ000000_Z-DR-LV-00275				

P01	S8	05/08/2022	First Issued	BB	HP	SK
Rev	Status	Rev. Date	Purpose of revision	Drawn	Chck'd	Apprv'd



P01	S8	05/08/2022	First Issued	BB	HP	SK
Rev	Status	Rev. Date	Purpose of revision	Drawn	Chck'd	Apprv'd

For location see Figure 7.16 - Visual Effects Drawing with Representative Viewpoint and Photomontage Locations

Camera: Canon EOS 6D MkII  
 Lens: Canon EF 50mm f/1.8 STM  
 Equipment: Manfrotto MA 454 Micro Positioning Plate  
 Manfrotto SBH-100 Ball Head

**Winter Viewpoint:**  
 Date and Time: N-33  
 21/02/2019 16:36

Visualisation Type: Type 3  
 Projection Type: Cylindrical  
 Enlargement Factor: 1.5  
 Horizontal FOV: 56.5°

FL, Max Aperture: 50mm, 1.75  
 Tripod Height: 1.5m  
 Viewpoint Ground Height: 4.3m AOD  
 Viewpoint Grid Reference: 562452E, 184590N

Distance to Order Limits: 550m  
 View Direction (Centre of View): NNW  
 GPS Accuracy: 5m



**LOWER THAMES CROSSING**  
 5th Floor Beaufort House  
 15 St Botolph Street  
 London EC3A 7DT

Project: LOWER THAMES CROSSING  
 Drawing title: Figure 7.19  
 Baseline Photography - Viewpoint N-33  
 Winter Year 1  
 Sheet 2 of 4

Drawn	BB	Date - 05/08/2022	Status	S8	Revision	P01
Checked	HP	Date - 05/08/2022	Application Document No. TR010032/APP/6.2			
Approved	SK	Date - 05/08/2022	Drawing number			
HE540039-CJV-ELS-SZP_ZZ000000_Z-DR-LV-00276A						



Rev	Status	Rev. Date	Purpose of revision	Drawn	Chck'd	Apprv'd
P01	S8	05/08/2022	First Issued	BB	HP	SK

For location see Figure 7.16 - Visual Effects Drawing with Representative Viewpoint and Photomontage Locations

<b>Winter Viewpoint:</b>	N-33	<b>Date and Time:</b>	21/02/2019 16:36
<b>Camera:</b>	Canon EOS 6D MkII	<b>Visualisation Type:</b>	Type 3
<b>Lens:</b>	Canon EF 50mm f/1.8 STM	<b>Projection Type:</b>	Cylindrical
<b>Equipment:</b>	Manfrotto MA 454 Micro Positioning Plate	<b>Enlargement Factor:</b>	1.5
	Manfrotto SBH-100 Ball Head	<b>Horizontal FOV:</b>	56.5°
<b>FL, Max Aperture:</b>	50mm, 1.75	<b>Distance to Order Limits:</b>	550m
<b>Tripod Height:</b>	1.5m	<b>View Direction</b>	(Centre of View): SW
<b>Viewpoint Ground Height:</b>	4.3m AOD	<b>GPS Accuracy:</b>	5m
<b>Viewpoint Grid Reference:</b>	562452E, 184590N		

Client

**LOWER THAMES CROSSING**  
 5th Floor Beaufort House  
 15 St Botolph Street  
 London EC3A 7DT

<b>Project</b>	LOWER THAMES CROSSING
<b>Drawing title</b>	Figure 7.19 Photomontage - Viewpoint N-33 Winter Year 1 Sheet 2 of 4

<b>Drawn</b>	BB	<b>Date</b>	- 05/08/2022	<b>Status</b>	S8	<b>Revision</b>	P01
<b>Checked</b>	HP	<b>Date</b>	- 05/08/2022				
<b>Approved</b>	SK	<b>Date</b>	- 05/08/2022				
<b>Drawing number</b>				HE540039-CJV-ELS-SZP_ZZ000000_Z-DR-LV-00276			
Application Document No. TR010032/APP/6.2							



For location see Figure 7.16 - Visual Effects Drawing with Representative Viewpoint and Photomontage Locations

<b>Summer Viewpoint:</b>	N-33	FL, Max Aperture:	50mm, 1.75	Distance to Order Limits:	550m
Date and Time:	05/06/2019 17:33	Tripod Height:	1.5m	View Direction	(Centre of View): NNW
Visualisation Type:	Type 3	Viewpoint Ground Height:	4.3m AOD	GPS Accuracy:	5m
Projection Type:	Cylindrical	Viewpoint Grid Reference:	562452E, 184590N		
Enlargement Factor:	1.5				
Horizontal FOV:	56.5°				

Camera:	Canon EOS 6D MkII
Lens:	Canon EF 50mm f/1.8 STM
Equipment:	Manfrotto MA 454 Micro Positioning Plate Manfrotto SBH-100 Ball Head



**LOWER THAMES CROSSING**  
5th Floor Beaufort House  
15 St Botolph Street  
London EC3A 7DT

Project LOWER THAMES CROSSING  
Drawing title Figure 7.19  
Baseline Photography - Viewpoint N-33  
Summer Year 15  
Sheet 3 of 4

Drawn	BB	Date - 05/08/2022	Status	S8	Revision	P01
Checked	HP	Date - 05/08/2022	Application Document No. TR010032/APP/6.2			
Approved	SK	Date - 05/08/2022	Drawing number			
HE540039-CJV-ELS-SZP_ZZ000000_Z-DR-LV-00277A						

Rev	Status	Rev. Date	Purpose of revision	Drawn	Chck'd	Apprv'd
P01	S8	05/08/2022	First Issued	BB	HP	SK





For location see Figure 7.16 - Visual Effects Drawing with Representative Viewpoint and Photomontage Locations

<b>Summer Viewpoint:</b>	N-33	FL, Max Aperture:	50mm, 1.75	Distance to Order Limits:	550m
Date and Time:	05/06/2019 17:33	Tripod Height:	1.5m	View Direction	(Centre of View): SW
Visualisation Type:	Type 3	Viewpoint Ground Height:	4.3m AOD	GPS Accuracy:	5m
Projection Type:	Cylindrical	Viewpoint Grid Reference:	562452E, 184590N		
Enlargement Factor:	1.5				
Horizontal FOV:	56.5°				

Camera:	Canon EOS 6D MkII
Lens:	Canon EF 50mm f/1.8 STM
Equipment:	Manfrotto MA 454 Micro Positioning Plate Manfrotto SBH-100 Ball Head



**LOWER THAMES CROSSING**  
 5th Floor Beaufort House  
 15 St Botolph Street  
 London EC3A 7DT

Project LOWER THAMES CROSSING  
 Drawing title Figure 7.19  
 Photomontage - Viewpoint N-33  
 Summer Year 15  
 Sheet 3 of 4

Drawn	BB	Date - 05/08/2022	Status	S8	Revision	P01
Checked	HP	Date - 05/08/2022	Application Document No. TR010032/APP/6.2			
Approved	SK	Date - 05/08/2022	Drawing number			
HE540039-CJV-ELS-SZP_ZZ000000_Z-DR-LV-00277						

Rev	Status	Rev. Date	Purpose of revision	Drawn	Chck'd	Apprv'd
P01	S8	05/08/2022	First Issued	BB	HP	SK



For location see Figure 7.16 - Visual Effects Drawing with Representative Viewpoint and Photomontage Locations

<b>Summer Viewpoint:</b>	N-33	<b>FL, Max Aperture:</b>	50mm, 1.75	<b>Distance to Order Limits:</b>	550m
<b>Date and Time:</b>	05/06/2019 17:33	<b>Tripod Height:</b>	1.5m	<b>View Direction (Centre of View):</b>	NNW
<b>Visualisation Type:</b>	Type 3	<b>Viewpoint Ground Height:</b>	4.3m AOD	<b>GPS Accuracy:</b>	5m
<b>Projection Type:</b>	Cylindrical	<b>Viewpoint Grid Reference:</b>	562452E, 184590N		
<b>Enlargement Factor:</b>	1.5				
<b>Horizontal FOV:</b>	56.5°				

<b>Camera:</b>	Canon EOS 6D MkII
<b>Lens:</b>	Canon EF 50mm f/1.8 STM
<b>Equipment:</b>	Manfrotto MA 454 Micro Positioning Plate Manfrotto SBH-100 Ball Head

Client



**LOWER THAMES CROSSING**  
 5th Floor Beaufort House  
 15 St Botolph Street  
 London EC3A 7DT

<b>Project</b>	LOWER THAMES CROSSING
<b>Drawing title</b>	Figure 7.19 Baseline Photography - Viewpoint N-33 Summer Year 15 Sheet 4 of 4

<b>Drawn</b>	BB	<b>Date</b>	- 05/08/2022	<b>Status</b>	S8	<b>Revision</b>	P01
<b>Checked</b>	HP	<b>Date</b>	- 05/08/2022				
<b>Approved</b>	SK	<b>Date</b>	- 05/08/2022				
<b>Drawing number</b>				HE540039-CJV-ELS-SZP_ZZ000000_Z-DR-LV-00278A			
				Application Document No. TR010032/APP/6.2			

<b>Rev</b>	<b>Status</b>	<b>Rev. Date</b>	<b>Purpose of revision</b>	<b>Drawn</b>	<b>Chck'd</b>	<b>Apprv'd</b>
P01	S8	05/08/2022	First Issued	BB	HP	SK



For location see Figure 7.16 - Visual Effects Drawing with Representative Viewpoint and Photomontage Locations

<b>Summer Viewpoint:</b>	N-33	FL, Max Aperture:	50mm, 1.75	Distance to Order Limits:	550m
Date and Time:	05/06/2019 17:33	Tripod Height:	1.5m	View Direction	(Centre of View): SW
Visualisation Type:	Type 3	Viewpoint Ground Height:	4.3m AOD	GPS Accuracy:	5m
Projection Type:	Cylindrical	Viewpoint Grid Reference:	562452E, 184590N		
Enlargement Factor:	1.5				
Horizontal FOV:	56.5°				

Camera:	Canon EOS 6D MkII
Lens:	Canon EF 50mm f/1.8 STM
Equipment:	Manfrotto MA 454 Micro Positioning Plate Manfrotto SBH-100 Ball Head

Client



**LOWER THAMES CROSSING**  
 5th Floor Beaufort House  
 15 St Botolph Street  
 London EC3A 7DT

Project	LOWER THAMES CROSSING
Drawing title	Figure 7.19 Photomontage - Viewpoint N-33 Summer Year 15 Sheet 4 of 4

Drawn	BB	Date - 05/08/2022	Status	Revision
Checked	HP	Date - 05/08/2022	S8	P01
Approved	SK	Date - 05/08/2022	Application Document No. TR010032/APP/6.2	
Drawing number		HE540039-CJV-ELS-SZP_ZZ000000_Z-DR-LV-00278		

Rev	Status	Rev. Date	Purpose of revision	Drawn	Chck'd	Apprv'd
P01	S8	05/08/2022	First Issued	BB	HP	SK



Rev	Status	Rev. Date	Purpose of revision	Drawn	Chck'd	Apprv'd
P01	S8	05/08/2022	First Issued	BB	HP	SK

For location see Figure 7.16 - Visual Effects Drawing with Representative Viewpoint and Photomontage Locations

Camera: Canon EOS 6D MkII  
 Lens: Canon EF 50mm f/1.8 STM  
 Equipment: Manfrotto MA 454 Micro Positioning Plate  
 Manfrotto SBH-100 Ball Head

**Winter Viewpoint:**  
 Date and Time: N-39  
 22/02/2019 11:10

Visualisation Type: Type 3  
 Projection Type: Cylindrical  
 Enlargement Factor: 1.5  
 Horizontal FOV: 56.5°

FL, Max Aperture: 50mm, 1.75  
 Tripod Height: 1.5m  
 Viewpoint Ground Height: 26.9m AOD  
 Viewpoint Grid Reference: 558690E, 184852N

Distance to Order Limits: 230m  
 View Direction (Centre of View): W  
 GPS Accuracy: 5m



**LOWER THAMES CROSSING**  
 5th Floor Beaufort House  
 15 St Botolph Street  
 London EC3A 7DT

Project: LOWER THAMES CROSSING  
 Drawing title: Figure 7.19  
 Baseline Photography - Viewpoint N-39  
 Winter Year 1  
 Sheet 1 of 4

Drawn	BB	Date - 05/08/2022	Status	Revision
Checked	HP	Date - 05/08/2022	S8	P01
Approved	SK	Date - 05/08/2022	Application Document No. TR010032/APP/6.2	
Drawing number HE540039-CJV-ELS-SZP_ZZ000000_Z-DR-LV-00279A				



P01	S8	05/08/2022	First Issued	BB	HP	SK
Rev	Status	Rev. Date	Purpose of revision	Drawn	Chck'd	Apprv'd

For location see Figure 7.16 - Visual Effects Drawing with Representative Viewpoint and Photomontage Locations		<b>Winter Viewpoint:</b>	N-39				
		Date and Time:	22/02/2019 11:10				
Camera:	Canon EOS 6D MkII	Visualisation Type:	Type 3	FL, Max Aperture:	50mm, 1.75	Distance to Order Limits:	0m
Lens:	Canon EF 50mm f/1.8 STM	Projection Type:	Cylindrical	Tripod Height:	1.5m	View Direction	W
Equipment:	Manfrotto MA 454 Micro Positioning Plate	Enlargement Factor:	1.5	Viewpoint Ground Height:	26.9m AOD	(Centre of View):	W
	Manfrotto SBH-100 Ball Head	Horizontal FOV:	56.5°	Viewpoint Grid Reference:	558690E, 184852N	GPS Accuracy:	5m



**LOWER THAMES CROSSING**  
 5th Floor Beaufort House  
 15 St Botolph Street  
 London EC3A 7DT

Project	LOWER THAMES CROSSING
Drawing title	Figure 7.19 Photomontage - Viewpoint N-39 Winter Year 1 Sheet 1 of 4

Drawn	BB	Date - 05/08/2022	Status	S8	Revision	P01
Checked	HP	Date - 05/08/2022				
Approved	SK	Date - 05/08/2022	Application Document No. TR010032/APP/6.2			
Drawing number		HE540039-CJV-ELS-SZP_ZZ000000_Z-DR-LV-00279				



Rev	Status	Rev. Date	Purpose of revision	Drawn	Chck'd	Apprv'd
P01	S8	05/08/2022	First Issued	BB	HP	SK

For location see Figure 7.16 - Visual Effects Drawing with Representative Viewpoint and Photomontage Locations		<b>Winter Viewpoint:</b> Date and Time:		N-39 22/02/2019 11:10	
Camera:	Canon EOS 6D MkII	Visualisation Type:	Type 3	FL, Max Aperture:	50mm, 1.75
Lens:	Canon EF 50mm f/1.8 STM	Projection Type:	Cylindrical	Tripod Height:	1.5m
Equipment:	Manfrotto MA 454 Micro Positioning Plate	Enlargement Factor:	1.5	Viewpoint Ground Height:	26.9m AOD
	Manfrotto SBH-100 Ball Head	Horizontal FOV:	56.5°	Viewpoint Grid Reference:	558690E, 184852N
				Distance to Order Limits:	230m
				View Direction (Centre of View):	W
				GPS Accuracy:	5m



**LOWER THAMES CROSSING**  
 5th Floor Beaufort House  
 15 St Botolph Street  
 London EC3A 7DT

Project	LOWER THAMES CROSSING
Drawing title	Figure 7.19 Baseline Photography - Viewpoint N-39 Winter Year 1 Sheet 2 of 4

Drawn	BB	Date	- 05/08/2022	Status	S8	Revision	P01
Checked	HP	Date	- 05/08/2022	Application Document No. TR010032/APP/6.2			
Approved	SK	Date	- 05/08/2022	Drawing number HE540039-CJV-ELS-SZP_ZZ000000_Z-DR-LV-00280A			



P01	S8	05/08/2022	First Issued	BB	HP	SK
Rev	Status	Rev. Date	Purpose of revision	Drawn	Chck'd	Apprv'd

For location see Figure 7.16 - Visual Effects Drawing with Representative Viewpoint and Photomontage Locations		<b>Winter Viewpoint:</b>	N-39				
		Date and Time:	22/02/2019 11:10				
Camera:	Canon EOS 6D MkII	Visualisation Type:	Type 3	FL, Max Aperture:	50mm, 1.75	Distance to Order Limits:	0m
Lens:	Canon EF 50mm f/1.8 STM	Projection Type:	Cylindrical	Tripod Height:	1.5m	View Direction	(Centre of View): W
Equipment:	Manfrotto MA 454 Micro Positioning Plate	Enlargement Factor:	1.5	Viewpoint Ground Height:	26.9m AOD	GPS Accuracy:	5m
	Manfrotto SBH-100 Ball Head	Horizontal FOV:	56.5°	Viewpoint Grid Reference:	558690E, 184852N		

Client



**LOWER THAMES CROSSING**  
 5th Floor Beaufort House  
 15 St Botolph Street  
 London EC3A 7DT

Project	LOWER THAMES CROSSING
Drawing title	Figure 7.19 Photomontage - Viewpoint N-39 Winter Year 1 Sheet 2 of 4

Drawn	BB	Date - 05/08/2022	Status	Revision
Checked	HP	Date - 05/08/2022	S8	P01
Approved	SK	Date - 05/08/2022	Application Document No. TR010032/APP/6.2	
Drawing number		HE540039-CJV-ELS-SZP_ZZ000000_Z-DR-LV-00280		



P01	S8	05/08/2022	First Issued	BB	HP	SK
Rev	Status	Rev. Date	Purpose of revision	Drawn	Chck'd	Apprv'd

For location see Figure 7.16 - Visual Effects Drawing with Representative Viewpoint and Photomontage Locations

Camera: Canon EOS 6D MkII  
 Lens: Canon EF 50mm f/1.8 STM  
 Equipment: Manfrotto MA 454 Micro Positioning Plate  
 Manfrotto SBH-100 Ball Head

Visualisation Type: Type 3  
 Projection Type: Cylindrical  
 Enlargement Factor: 1.5  
 Horizontal FOV: 56.5°

Summer Viewpoint:  
 Date and Time: N-39  
 05/06/2019 13:43

FL, Max Aperture: 50mm, 1.75  
 Tripod Height: 1.5m  
 Viewpoint Ground Height: 26.9m AOD  
 Viewpoint Grid Reference: 558690E, 184852N

Distance to Order Limits: 230m  
 View Direction (Centre of View): W  
 GPS Accuracy: 5m



**LOWER THAMES CROSSING**  
 5th Floor Beaufort House  
 15 St Botolph Street  
 London EC3A 7DT

Project: LOWER THAMES CROSSING  
 Drawing title: Figure 7.19  
 Baseline Photography - Viewpoint N-39  
 Summer Year 15  
 Sheet 3 of 4

Drawn	BB	Date - 05/08/2022	Status	S8	Revision	P01
Checked	HP	Date - 05/08/2022	Application Document No. TR010032/APP/6.2			
Approved	SK	Date - 05/08/2022	Drawing number			
HE540039-CJV-ELS-SZP_ZZ000000_Z-DR-LV-00281A						





P01	S8	05/08/2022	First Issued	BB	HP	SK
Rev	Status	Rev. Date	Purpose of revision	Drawn	Chck'd	Apprv'd

For location see Figure 7.16 - Visual Effects Drawing with Representative Viewpoint and Photomontage Locations

Camera: Canon EOS 6D MkII  
 Lens: Canon EF 50mm f/1.8 STM  
 Equipment: Manfrotto MA 454 Micro Positioning Plate  
 Manfrotto SBH-100 Ball Head

**Summer Viewpoint:**  
 Date and Time: N-39  
 05/06/2019 13:43

Visualisation Type: Type 3  
 Projection Type: Cylindrical  
 Enlargement Factor: 1.5  
 Horizontal FOV: 56.5°

FL, Max Aperture: 50mm, 1.75  
 Tripod Height: 1.5m  
 Viewpoint Ground Height: 26.9m AOD  
 Viewpoint Grid Reference: 558690E, 184852N

Distance to Order Limits: 0m  
 View Direction (Centre of View): W  
 GPS Accuracy: 5m



**LOWER THAMES CROSSING**  
 5th Floor Beaufort House  
 15 St Botolph Street  
 London EC3A 7DT

Project LOWER THAMES CROSSING  
 Drawing title Figure 7.19  
 Photomontage - Viewpoint N-39  
 Summer Year 15  
 Sheet 3 of 4

Drawn	BB	Date - 05/08/2022	Status	S8	Revision	P01
Checked	HP	Date - 05/08/2022	Application Document No. TR010032/APP/6.2			
Approved	SK	Date - 05/08/2022	Drawing number			
HE540039-CJV-ELS-SZP_ZZ000000_Z-DR-LV-00281						



P01	S8	05/08/2022	First Issued	BB	HP	SK
Rev	Status	Rev. Date	Purpose of revision	Drawn	Chck'd	Apprv'd

<small>For location see Figure 7.16 - Visual Effects Drawing with Representative Viewpoint and Photomontage Locations</small>		<b>Summer Viewpoint:</b> Date and Time: N-39 05/06/2019 13:43	Camera: Canon EOS 6D MkII Lens: Canon EF 50mm f/1.8 STM Equipment: Manfrotto MA 454 Micro Positioning Plate Manfrotto SBH-100 Ball Head	Visualisation Type: Type 3 Projection Type: Cylindrical Enlargement Factor: 1.5 Horizontal FOV: 56.5°	FL, Max Aperture: 50mm, 1.75 Tripod Height: 1.5m Viewpoint Ground Height: 26.9m AOD Viewpoint Grid Reference: 558690E, 184852N	Distance to Order Limits: 230m View Direction (Centre of View): W GPS Accuracy: 5m
---	--	---	--	--	---	--



Client  
**LOWER THAMES CROSSING**  
 5th Floor Beaufort House  
 15 St Botolph Street  
 London EC3A 7DT

Project LOWER THAMES CROSSING  
 Drawing title Figure 7.19  
 Baseline Photography - Viewpoint N-39  
 Summer Year 15  
 Sheet 4 of 4

Drawn	BB	Date - 05/08/2022	Status	S8	Revision	P01
Checked	HP	Date - 05/08/2022	Application Document No. TR010032/APP/6.2			
Approved	SK	Date - 05/08/2022	Drawing number			
HE540039-CJV-ELS-SZP_ZZ000000_Z-DR-LV-00282A						



P01	S8	05/08/2022	First Issued	BB	HP	SK
Rev	Status	Rev. Date	Purpose of revision	Drawn	Chck'd	Apprv'd

For location see Figure 7.16 - Visual Effects Drawing with Representative Viewpoint and Photomontage Locations		<b>Summer Viewpoint:</b> Date and Time:	N-39 05/06/2019 13:43	Camera:	Canon EOS 6D MkII	Visualisation Type:	Type 3	FL, Max Aperture:	50mm, 1.75	Distance to Order Limits:	0m
Lens:	Canon EF 50mm f/1.8 STM	Projection Type:	Cylindrical	Equipment:	Manfrotto MA 454 Micro Positioning Plate	Enlargement Factor:	1.5	Tripod Height:	1.5m	View Direction (Centre of View):	W
	Manfrotto SBH-100 Ball Head	Horizontal FOV:	56.5°	Viewpoint Ground Height:	26.9m AOD	Viewpoint Grid Reference:	558690E, 184852N	GPS Accuracy:	5m		



**LOWER THAMES CROSSING**  
5th Floor Beaufort House  
15 St Botolph Street  
London EC3A 7DT

Project	LOWER THAMES CROSSING
Drawing title	Figure 7.19 Photomontage - Viewpoint N-39 Summer Year 15 Sheet 4 of 4

Drawn	BB	Date - 05/08/2022	Status	S8	Revision	P01
Checked	HP	Date - 05/08/2022	Application Document No. TR010032/APP/6.2			
Approved	SK	Date - 05/08/2022	Drawing number			
HE540039-CJV-ELS-SZP_ZZ000000_Z-DR-LV-00282						



For location see Figure 7.16 - Visual Effects Drawing with Representative Viewpoint and Photomontage Locations

**Winter Viewpoint:**  
Date and Time: N-42  
21/02/2019 15:19

Camera: Canon EOS 6D MkII  
Lens: Canon EF 50mm f/1.8 STM  
Equipment: Manfrotto MA 454 Micro Positioning Plate  
Manfrotto SBH-100 Ball Head

Visualisation Type: Type 3  
Projection Type: Cylindrical  
Enlargement Factor: 1.5  
Horizontal FOV: 56.5°

FL, Max Aperture: 50mm, 1.75  
Tripod Height: 1.5m  
Viewpoint Ground Height: 21.5m AOD  
Viewpoint Grid Reference: 558347E, 186106N  
Distance to Order Limits: 20m  
View Direction (Centre of View): SE  
GPS Accuracy: 5m

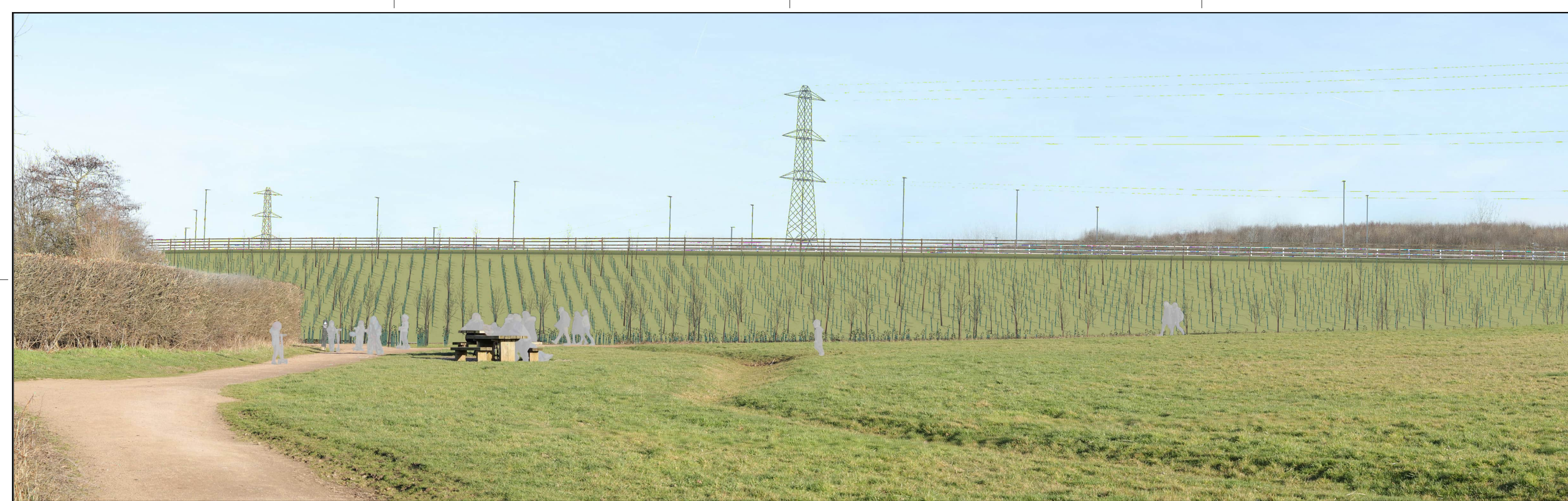


**LOWER THAMES CROSSING**  
5th Floor Beaufort House  
15 St Botolph Street  
London EC3A 7DT

Project: LOWER THAMES CROSSING  
Drawing title: Figure 7.19  
Baseline Photography - Viewpoint N-42  
Winter Year 1  
Sheet 1 of 4

Drawn	BB	Date - 05/08/2022	Status	Revision
Checked	HP	Date - 05/08/2022	S8	P01
Approved	SK	Date - 05/08/2022	Application Document No. TR010032/APP/6.2	
Drawing number				
HE540039-CJV-ELS-SZP_ZZ000000_Z-DR-LV-00283A				

P01	S8	05/08/2022	First Issued	BB	HP	SK
Rev	Status	Rev. Date	Purpose of revision	Drawn	Chck'd	Apprv'd



P01	S8	05/08/2022	First Issued	BB	HP	SK
Rev	Status	Rev. Date	Purpose of revision	Drawn	Chck'd	Apprv'd

For location see Figure 7.16 - Visual Effects Drawing with Representative Viewpoint and Photomontage Locations

Camera: Canon EOS 6D MkII  
 Lens: Canon EF 50mm f/1.8 STM  
 Equipment: Manfrotto MA 454 Micro Positioning Plate  
 Manfrotto SBH-100 Ball Head

**Winter Viewpoint:**  
 Date and Time: N-42  
 21/02/2019 15:19

Visualisation Type: Type 3  
 Projection Type: Cylindrical  
 Enlargement Factor: 1.5  
 Horizontal FOV: 56.5°

FL, Max Aperture: 50mm, 1.75  
 Tripod Height: 1.5m  
 Viewpoint Ground Height: 21.5m AOD  
 Viewpoint Grid Reference: 558347E, 186106N

Distance to Order Limits: 20m  
 View Direction (Centre of View): SE  
 GPS Accuracy: 5m



**LOWER THAMES CROSSING**  
 5th Floor Beaufort House  
 15 St Botolph Street  
 London EC3A 7DT

Project: LOWER THAMES CROSSING  
 Drawing title: Figure 7.19  
 Photomontage - Viewpoint N-42  
 Winter Year 1  
 Sheet 1 of 4

Drawn	BB	Date - 05/08/2022	Status	Revision
Checked	HP	Date - 05/08/2022	S8	P01
Approved	SK	Date - 05/08/2022	Application Document No. TR010032/APP/6.2	
Drawing number HE540039-CJV-ELS-SZP_ZZ000000_Z-DR-LV-00283				



Rev	Status	Rev. Date	Purpose of revision	Drawn	Chck'd	Apprv'd
P01	S8	05/08/2022	First Issued	BB	HP	SK

For location see Figure 7.16 - Visual Effects Drawing with Representative Viewpoint and Photomontage Locations

Camera: Canon EOS 6D MkII  
 Lens: Canon EF 50mm f/1.8 STM  
 Equipment: Manfrotto MA 454 Micro Positioning Plate  
 Manfrotto SBH-100 Ball Head

**Winter Viewpoint:**  
 Date and Time: N-42  
 21/02/2019 15:19

Visualisation Type: Type 3  
 Projection Type: Cylindrical  
 Enlargement Factor: 1.5  
 Horizontal FOV: 56.5°

FL, Max Aperture: 50mm, 1.75  
 Tripod Height: 1.5m  
 Viewpoint Ground Height: 21.5m AOD  
 Viewpoint Grid Reference: 558347E, 186106N

Distance to Order Limits: 20m  
 View Direction (Centre of View): SE  
 GPS Accuracy: 5m



**Client**  
**LOWER THAMES CROSSING**  
 5th Floor Beaufort House  
 15 St Botolph Street  
 London EC3A 7DT

**Project**  
 LOWER THAMES CROSSING

**Drawing title**  
 Figure 7.19  
 Baseline Photography - Viewpoint N-42  
 Winter Year 1  
 Sheet 2 of 4

Drawn	BB	Date - 05/08/2022	Status	Revision
Checked	HP	Date - 05/08/2022	S8	P01
Approved	SK	Date - 05/08/2022	Application Document No. TR010032/APP/6.2	
Drawing number <b>HE540039-CJV-ELS-SZP_ZZ000000_Z-DR-LV-00284A</b>				



P01	S8	05/08/2022	First Issued	BB	HP	SK
Rev	Status	Rev. Date	Purpose of revision	Drawn	Chck'd	Apprv'd

For location see Figure 7.16 - Visual Effects Drawing with Representative Viewpoint and Photomontage Locations

Camera: Canon EOS 6D MkII  
 Lens: Canon EF 50mm f/1.8 STM  
 Equipment: Manfrotto MA 454 Micro Positioning Plate  
 Manfrotto SBH-100 Ball Head

**Winter Viewpoint:**  
 Date and Time: N-42  
 21/02/2019 15:19

Visualisation Type: Type 3  
 Projection Type: Cylindrical  
 Enlargement Factor: 1.5  
 Horizontal FOV: 56.5°

FL, Max Aperture: 50mm, 1.75  
 Tripod Height: 1.5m  
 Viewpoint Ground Height: 21.5m AOD  
 Viewpoint Grid Reference: 558347E, 186106N

Distance to Order Limits: 20m  
 View Direction (Centre of View): SE  
 GPS Accuracy: 5m



**LOWER THAMES CROSSING**  
 5th Floor Beaufort House  
 15 St Botolph Street  
 London EC3A 7DT

Project: LOWER THAMES CROSSING  
 Drawing title: Figure 7.19  
 Photomontage - Viewpoint N-42  
 Winter Year 1  
 Sheet 2 of 4

Drawn	BB	Date - 05/08/2022	Status	Revision
Checked	HP	Date - 05/08/2022	S8	P01
Approved	SK	Date - 05/08/2022	Application Document No. TR010032/APP/6.2	
Drawing number HE540039-CJV-ELS-SZP_ZZ000000_Z-DR-LV-00284				



Rev	Status	Rev. Date	Purpose of revision	Drawn	Chck'd	Apprv'd
P01	S8	05/08/2022	First Issued	BB	HP	SK

For location see Figure 7.16 - Visual Effects Drawing with Representative Viewpoint and Photomontage Locations		<b>Summer Viewpoint:</b>	N-42				
		Date and Time:	05/06/2019 14:02				
Camera:	Canon EOS 6D MkII	Visualisation Type:	Type 3	FL, Max Aperture:	50mm, 1.75	Distance to Order Limits:	20m
Lens:	Canon EF 50mm f/1.8 STM	Projection Type:	Cylindrical	Tripod Height:	1.5m	View Direction	(Centre of View): SE
Equipment:	Manfrotto MA 454 Micro Positioning Plate	Enlargement Factor:	1.5	Viewpoint Ground Height:	21.5m AOD	Viewpoint Grid Reference:	558347E, 186106N
	Manfrotto SBH-100 Ball Head	Horizontal FOV:	56.5°	Viewpoint Grid Reference:	558347E, 186106N	GPS Accuracy:	5m



**LOWER THAMES CROSSING**  
 5th Floor Beaufort House  
 15 St Botolph Street  
 London EC3A 7DT

Project	LOWER THAMES CROSSING
Drawing title	Figure 7.19 Baseline Photography - Viewpoint N-42 Summer Year 15 Sheet 3 of 4

Drawn	BB	Date - 05/08/2022	Status	S8	Revision	P01
Checked	HP	Date - 05/08/2022				
Approved	SK	Date - 05/08/2022	Application Document No. TR010032/APP/6.2			
Drawing number		HE540039-CJV-ELS-SZP_ZZ000000_Z-DR-LV-00285A				





Rev	Status	Rev. Date	Purpose of revision	Drawn	Chck'd	Apprv'd
P01	S8	05/08/2022	First Issued	BB	HP	SK

For location see Figure 7.16 - Visual Effects Drawing with Representative Viewpoint and Photomontage Locations		<b>Summer Viewpoint:</b>		N-42	
		Date and Time:		05/06/2019 14:02	
Camera:	Canon EOS 6D MkII	Visualisation Type:	Type 3	FL, Max Aperture:	50mm, 1.75
Lens:	Canon EF 50mm f/1.8 STM	Projection Type:	Cylindrical	Tripod Height:	1.5m
Equipment:	Manfrotto MA 454 Micro Positioning Plate	Enlargement Factor:	1.5	Viewpoint Ground Height:	21.5m AOD
	Manfrotto SBH-100 Ball Head	Horizontal FOV:	56.5°	Viewpoint Grid Reference:	558347E, 186106N
				Distance to Order Limits:	20m
				View Direction (Centre of View):	SE
				GPS Accuracy:	5m



**LOWER THAMES CROSSING**  
 5th Floor Beaufort House  
 15 St Botolph Street  
 London EC3A 7DT

Project	LOWER THAMES CROSSING
Drawing title	Figure 7.19 Photomontage - Viewpoint N-42 Summer Year 15 Sheet 3 of 4

Drawn	BB	Date - 05/08/2022	Status	S8	Revision	P01
Checked	HP	Date - 05/08/2022	Application Document No. TR010032/APP/6.2			
Approved	SK	Date - 05/08/2022	Drawing number			
HE540039-CJV-ELS-SZP_ZZ000000_Z-DR-LV-00285						



Rev	Status	Rev. Date	Purpose of revision	Drawn	Chck'd	Apprv'd
P01	S8	05/08/2022	First Issued	BB	HP	SK

For location see Figure 7.16 - Visual Effects Drawing with Representative Viewpoint and Photomontage Locations

Camera: Canon EOS 6D MkII  
 Lens: Canon EF 50mm f/1.8 STM  
 Equipment: Manfrotto MA 454 Micro Positioning Plate  
 Manfrotto SBH-100 Ball Head

**Summer Viewpoint:**  
 Date and Time: N-42  
 05/06/2019 14:02

Visualisation Type: Type 3  
 Projection Type: Cylindrical  
 Enlargement Factor: 1.5  
 Horizontal FOV: 56.5°

FL, Max Aperture: 50mm, 1.75  
 Tripod Height: 1.5m  
 Viewpoint Ground Height: 21.5m AOD  
 Viewpoint Grid Reference: 558347E, 186106N

Distance to Order Limits: 20m  
 View Direction (Centre of View): SE  
 GPS Accuracy: 5m



**LOWER THAMES CROSSING**  
 5th Floor Beaufort House  
 15 St Botolph Street  
 London EC3A 7DT

Project: LOWER THAMES CROSSING  
 Drawing title: Figure 7.19  
 Baseline Photography - Viewpoint N-42  
 Summer Year 15  
 Sheet 4 of 4

Drawn	BB	Date - 05/08/2022	Status	S8	Revision	P01
Checked	HP	Date - 05/08/2022	Application Document No. TR010032/APP/6.2			
Approved	SK	Date - 05/08/2022	Drawing number			
HE540039-CJV-ELS-SZP_ZZ000000_Z-DR-LV-00286A						



P01	S8	05/08/2022	First Issued	BB	HP	SK
Rev	Status	Rev. Date	Purpose of revision	Drawn	Chck'd	Apprv'd

For location see Figure 7.16 - Visual Effects Drawing with Representative Viewpoint and Photomontage Locations		<b>Summer Viewpoint:</b>	N-42				
		Date and Time:	05/06/2019 14:02				
Camera:	Canon EOS 6D MkII	Visualisation Type:	Type 3	FL, Max Aperture:	50mm, 1.75	Distance to Order Limits:	20m
Lens:	Canon EF 50mm f/1.8 STM	Projection Type:	Cylindrical	Tripod Height:	1.5m	View Direction	(Centre of View): SE
Equipment:	Manfrotto MA 454 Micro Positioning Plate	Enlargement Factor:	1.5	Viewpoint Ground Height:	21.5m AOD	Viewpoint Grid Reference:	558347E, 186106N
	Manfrotto SBH-100 Ball Head	Horizontal FOV:	56.5°	Viewpoint Grid Reference:	558347E, 186106N	GPS Accuracy:	5m



**LOWER THAMES CROSSING**  
 5th Floor Beaufort House  
 15 St Botolph Street  
 London EC3A 7DT

Project	LOWER THAMES CROSSING
Drawing title	Figure 7.19 Photomontage - Viewpoint N-42 Summer Year 15 Sheet 4 of 4

Drawn	BB	Date - 05/08/2022	Status	S8	Revision	P01
Checked	HP	Date - 05/08/2022				
Approved	SK	Date - 05/08/2022	Application Document No. TR010032/APP/6.2			
Drawing number		HE540039-CJV-ELS-SZP_ZZ000000_Z-DR-LV-00286				

If you need help accessing this or any other National Highways information, please call **0300 123 5000** and we will help you.

© Crown copyright 2022.

You may re-use this information (not including logos) free of charge in any format or medium, under the terms of the Open Government Licence. To view this licence:

visit [www.nationalarchives.gov.uk/doc/open-government-licence/](http://www.nationalarchives.gov.uk/doc/open-government-licence/)

write to the **Information Policy Team, The National Archives, Kew, London TW9 4DU**, or email [psi@nationalarchives.gsi.gov.uk](mailto:psi@nationalarchives.gsi.gov.uk).

Mapping (where present): © Crown copyright and database rights 2022 OS 100030649. You are permitted to use this data solely to enable you to respond to, or interact with, the organisation that provided you with the data. You are not permitted to copy, sub-license, distribute or sell any of this data to third parties in any form.

If you have any enquiries about this publication email [info@nationalhighways.co.uk](mailto:info@nationalhighways.co.uk) or call **0300 123 5000\***.

\*Calls to 03 numbers cost no more than a national rate call to an 01 or 02 number and must count towards any inclusive minutes in the same way as 01 and 02 calls. These rules apply to calls from any type of line including mobile, BT, other fixed line or payphone. Calls may be recorded or monitored.

Printed on paper from well-managed forests and other controlled sources when issued directly by National Highways.

Registered office Bridge House, 1 Walnut Tree Close, Guildford GU1 4LZ

National Highways Company Limited registered in England and Wales number 09346363